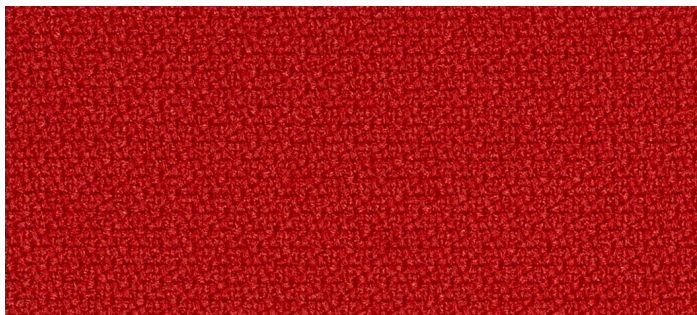


Step Trevira CS red

Product number: 172X63012



Product information

Abrasion cycles:	Martindale \geq 100,000
Colour:	Red
Intended use:	Interior Design / Architecture, Restaurants / Hotels, Yachts / Ships
Material:	Fabric
Standards:	ASTM D3511 (Pilling), ASTM D4157-07 (heavy duty), Ansi/BiFma VOC test M7.1 (VOC emission), BIFMA HCF 8.1 ACT method 1 (resistance to bleach cleaning), BS 5852 - IS 0/1, BS5852 Crip 5, BS5852-IS 5, BS7176 (Medium risk), BS EN ISO 105-D02 (rubbing with organic solvents), BS EN ISO 105-E16 (colour fastness to water stains), BS EN ISO 105-X12 (colour fastness to friction), BS EN ISO 6330 (stability of the wash), BS EN ISO 13936-2 (seam slippage), DIN / BS EN 1021 1 + 2, DIN EN 1021 1+2, DIN EN 4102-B1, DIN EN 4102-B2, DIN EN 13501-1 B, s1, d0, DIN EN ISO 105-B02 (UV protection in level), DIN EN ISO 1021 Part 1, DIN EN ISO 1021 Part 2, DIN EN ISO 12947-2, EN 29053, & ISO 9053-1 (flow resistance), ISO 354, & ISO 11654 (sound absorption), OENORM B3825 (Q1), ÖNORM 3800-1

Erstellt am 10.11.2024.

Dieses Dokument stellt kein Angebot da. Es gelten die aktuellen Preise im Online-Shop.

* All prices excl. VAT plus shipping costs and, if applicable, cash on delivery charges, unless otherwise stated.

Options

